



|| Tevo Sada Dnyanmaya Pradeep ||  
Jijamata Shikshan Prasarak Mandal's

Phone (02185) 226699

# Jijamata Mahavidyalaya, Sarati

A/p: - Sarati, Tal. Indapur, Dist. Pune (Pin: 413103) Maharashtra, India  
(Affiliated to Savitribai Phule Pune University, Pune)

Estd: 2013

Govt. San. No.N.G.C.2013 (100/13) Mashi-4, Dt.15 July2013 College Code 1504 Uni.Appvl. No. ID.NO PU/PN/SC/458/2013

## Document for SSR

The Document regarding the Document for 7.1.2 are attached here with this letter.

### Index

Sr.No	Particulars / Report
1.	Alternate sources of energy and energy conservation
2.	Management of the various types of degradable and non-degradable
3.	Water conservation
4.	Green campus initiatives
5.	Disabled-friendly, barrier free environment

  
**IQAC Co-ordinator**  
Jijamata Mahavidyalaya Sarati  
Tal.Indapur, Dist.Pune - 413103



  
**Principal**  
Jijamata Mahavidyalaya Sarati  
Tal.Indapur, Dist.Pune - 413103

## Energy Conservation and Alternative Energy Source

1. The display of Environmental Policy and Sustainable Energy Use Policy helps the system to check on the energy consumption.
2. For energy conservation during day time, the building is designed in such a way that the natural light enters the classroom and laboratories in ample amount.
3. The building is electrified with LED bulbs and energy efficient fans and other instrument.



**Solar Light**

  
**IQAC Co-ordinator**  
Jijamata Mahavidyalaya Sarati  
Tal.Indapur, Dist.Pune - 413103



  
**Principal**  
Jijamata Mahavidyalaya Sarati  
Tal.Indapur, Dist.Pune - 413103



## Solar Light

  
**IQAC Co-ordinator**  
Jijamata Mahavidyalaya Sarati  
Tal.Indapur, Dist.Pune - 413103



  
**Principal**  
Jijamata Mahavidyalaya Sarati  
Tal.Indapur, Dist.Pune - 413103

## Green Campus Initiation

1. Improve the capacity and quality of compost in the college campus.
2. Rain water harvesting system is recommended on the college campus.
3. Use of public transport and vehicle pooling to be encouraged amongst staff and students.
4. Water consumption should be reduced using suitable techniques/methods wherever possible.
5. Awareness boards for saving energy and water to be displayed in all circulation areas and throughout the campus.
6. Programs/ Activities for inculcating strong sensitivity towards the environment must be arranged regularly for all stakeholders of the Institute.
7. Proper segregation, disposal and recycling methods to be adopted for different wastes generated on campus like paper, plastic.

  
**IQAC Co-ordinator**  
**Jijamata Mahavidyalaya Sarati**  
**Tal.Indapur, Dist.Pune - 413103**



  
**Principal**  
**Jijamata Mahavidyalaya Sarati**  
**Tal.Indapur, Dist.Pune - 413103**





  
**IQAC Co-ordinator**  
**Jijamata Mahavidyalaya Sarati**  
**Tal.Indapur, Dist.Pune - 413103**




  
**Principal**  
**Jijamata Mahavidyalaya Sarati**  
**Tal.Indapur, Dist.Pune - 413103**





  
**IQAC Co-ordinator**  
Jijamata Mahavidyalaya Sarati  
Tal.Indapur, Dist.Pune - 413103



  
**Principal**  
Jijamata Mahavidyalaya Sarati  
Tal.Indapur, Dist.Pune - 413103



## Waste management

In Jijamata College campus leaf litter is collected and vermicompost is made from it. Leaves are collected with the help of students and the compost is used as organic fertilizer for the garden in the college premises.

In this age of information and technology, e-waste management is indispensable. This waste is deposited in store rooms in the campus and the remaining plastic parts are sold to scrap dealers.



  
**IQAC Co-ordinator**  
Jijamata Mahavidyalaya Sarati  
Tal.Indapur, Dist.Pune - 413103



  
**Principal**  
Jijamata Mahavidyalaya Sarati  
Tal.Indapur, Dist.Pune - 413103



  
**IQAC Co-ordinator**  
**Jijamata Mahavidyalaya Sarati**  
**Tal.Indapur, Dist.Pune - 413103**



  
**Principal**  
**Jijamata Mahavidyalaya Sarati**  
**Tal.Indapur, Dist.Pune - 413103**



## Water conservation and rain water Harvesting

Jijamata College has implemented an efficient water harvesting system by starting rainwater harvesting from the rooftop.



  
**IOAC Co-ordinator**  
Jijamata Mahavidyalaya Sarati  
Tal.Indapur, Dist.Pune - 413103



  
**Principal**  
Jijamata Mahavidyalaya Sarati  
Tal.Indapur, Dist.Pune - 413103





**Water Harvesting Unit**



  
**IQAC Co-ordinator**  
 Jijamata Mahavidyalaya Sarati  
 Tal.Indapur, Dist.Pune - 413103



  
**Principal**  
 Jijamata Mahavidyalaya Sarati  
 Tal.Indapur, Dist.Pune - 413103



## Disabled ferriendly campus

At Jijamata College to facilitate a supportive environment for the students we have made our building handicap friendly stairs and also we have made wheelchairs available 24 hours a day to ensure that mobility is not hindered for the physically challenged students.

We identify all teachers at the beginning of each academic year to meet the needs of students physically and have classrooms planned in the basement for students with disabilities. We put students' needs first and truly encourage all students.

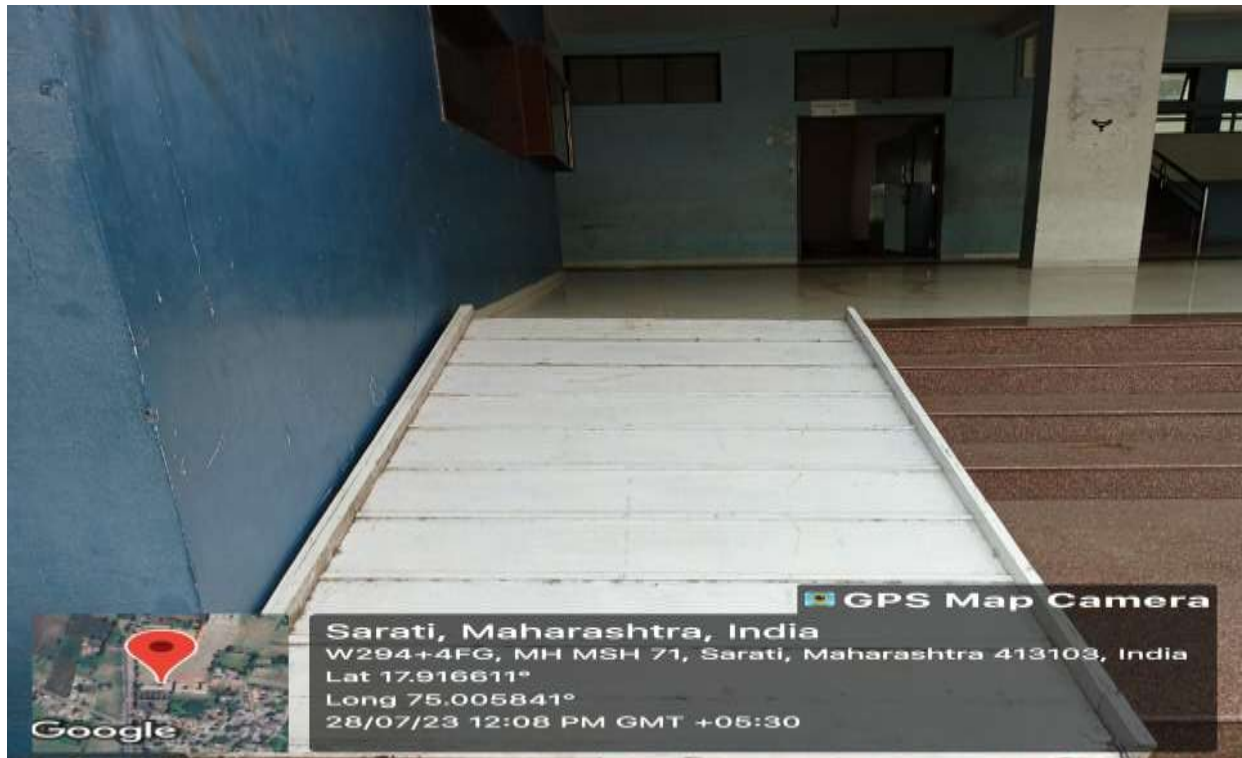


**College Building**

  
**IQAC Co-ordinator**  
Jijamata Mahavidyalaya Sarati  
Tal.Indapur, Dist.Pune - 413103



  
**Principal**  
Jijamata Mahavidyalaya Sarati  
Tal.Indapur, Dist.Pune - 413103



**Ramp for Handicapped Students**

  
**IQAC Co-ordinator**  
Jijamata Mahavidyalaya Sarati  
Tal.Indapur, Dist.Pune - 413103



  
**Principal**  
Jijamata Mahavidyalaya Sarati  
Tal.Indapur, Dist.Pune - 413103



## Security Measures in the Campus



The Campus is facing the Camera



## Energy Efficient Fans in the Classrooms

  
**IQAC Co-ordinator**  
Jijamata Mahavidyalaya Sarati  
Tal.Indapur, Dist.Pune - 413103



  
**Principal**  
Jijamata Mahavidyalaya Sarati  
Tal.Indapur, Dist.Pune - 413103





**Fire Exhauster**



**Fire S ent**





**LCD Projector**



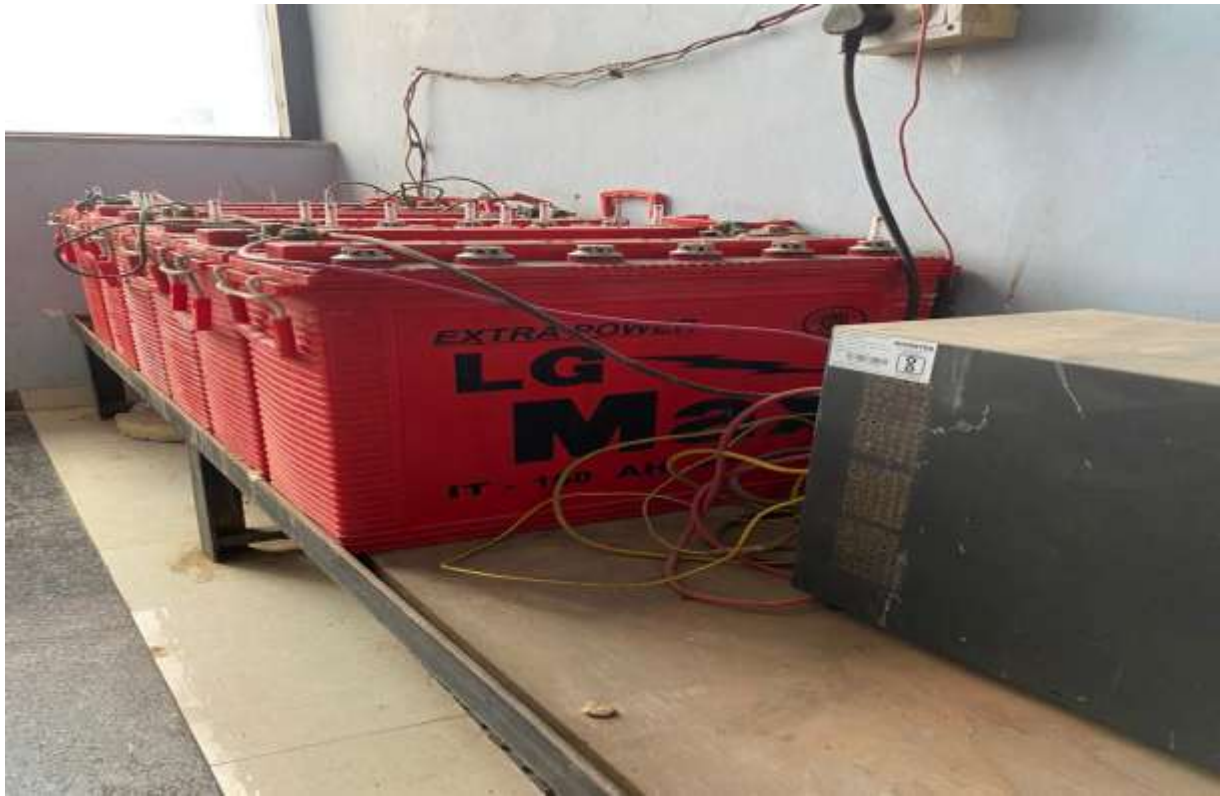




  
**IQAC Co-ordinator**  
**Jijamata Mahavidyalaya Sarati**  
**Tal.Indapur, Dist.Pune - 413103**



  
**Principal**  
**Jijamata Mahavidyalaya Sarati**  
**Tal.Indapur, Dist.Pune - 413103**



**Online UPS**



  
**IQAC Co-ordinator**  
 Jijamata Mahavidyalaya Sarati  
 Tal.Indapur, Dist.Pune - 413103



  
**Principal**  
 Jijamata Mahavidyalaya Sarati  
 Tal.Indapur, Dist.Pune - 413103





## Clean College Campus for Student



  
**IQAC Co-ordinator**  
 Jijamata Mahavidyalaya Sarati  
 Tal.Indapur, Dist.Pune - 413103



  
**Principal**  
 Jijamata Mahavidyalaya Sarati  
 Tal.Indapur, Dist.Pune - 413103





**Tree Plantation**

  
**IQAC Co-ordinator**  
Jijamata Mahavidyalaya Sarati  
Tal.Indapur, Dist.Pune - 413103



  
**Principal**  
Jijamata Mahavidyalaya Sarati  
Tal.Indapur, Dist.Pune - 413103





**Water Tank**

  
**IQAC Co-ordinator**  
**Jijamata Mahavidyalaya Sarati**  
**Tal.Indapur, Dist.Pune - 413103**



  
**Principal**  
**Jijamata Mahavidyalaya Sarati**  
**Tal.Indapur, Dist.Pune - 413103**



## Drinking Water

  
**IQAC Co-ordinator**  
Jijamata Mahavidyalaya Sarati  
Tal.Indapur, Dist.Pune - 413103



  
**Principal**  
Jijamata Mahavidyalaya Sarati  
Tal.Indapur, Dist.Pune - 413103